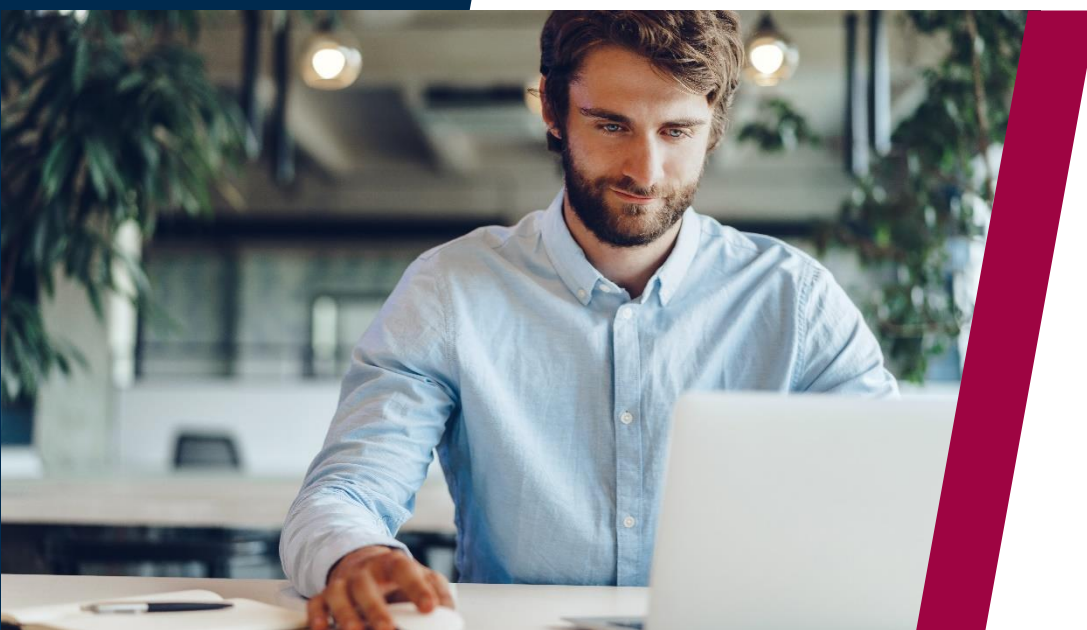
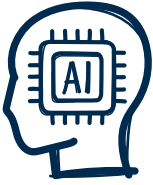


Understand Technical Requirements for Facial Detection and Head Tracking Flow



Where people meet potential



AI-enhanced facial detection and head tracking

Our human-first approach to AI — including sophisticated facial detection and head tracking features — demonstrates that Test Taker comfort and security are our top priorities.

Facial detection is the process of confirming whether a Test Taker's face is visible to the camera. If the system detects that no face is present during the test it will register a violation. Violations will always be reviewed by a human proctor.

It is different to facial recognition. PSI does not use AI based facial recognition to establish the Test Taker's identity. Test taker identity is always established by a human proctor.

As well as facial detection, PSI Bridge now utilizes head tracking capabilities with 'Extended Look Away' and 'Potential Reference Material' auto-alerts for proctors to enhance test security and reduce test taker interruptions.

The "Consecutive or Extended Look Away" function, alerts the proctor if the test taker is looking away for an extended period of time. This may be triggered when the test taker is looking away to the right, or left, or down for more than 20 or 30 seconds. This looking away alert timer can be configured to Client requirements.

Another head tracking feature, "Potential Reference Materials," alerts the proctor if the test taker performs multiple head or face movements, such as repeatedly looking away. This is based on a pre-configured rule for frequency, duration and amount of time, for example, the test taker has looked away 3 times, for 15 seconds each time, within a 2-minute period of time.

PSI has recently updated and enhanced these AI features, to deliver:

- ✓ More robust, enhanced accuracy
- ✓ Improved tracking of movements out of camera view or side views
- ✓ Better tracking for eye-glasses, facial hair, and lighting issues

Facial detection and head tracking enabled/disabled status



Enabled:

- Whenever a Test Taker has completed their check-in flow and the exam has been released by the proctor

Disabled

- All through the check-in process
- Any time an exam is paused (breaks or paused by proctor)

Disabled (optional, at the discretion of the proctor):

- If the proctor recognizes that the PSI Secure Browser is having difficulty detecting a candidate's face, they can disable facial detection for the remainder of the proctoring session. The Proctor has an ability to re-enable the facial detection after the test taker rectifies any issues (e.g. like moving to the better lighting spot).

The Enable/Disable button function is marked by the Artificial Intelligence graphic icon show in the example below.

Both Facial Detection and Head Tracking features are located within the AI button.



The **green ring** in the following image illustrates Facial Detection enabled and detecting a face in the video stream:

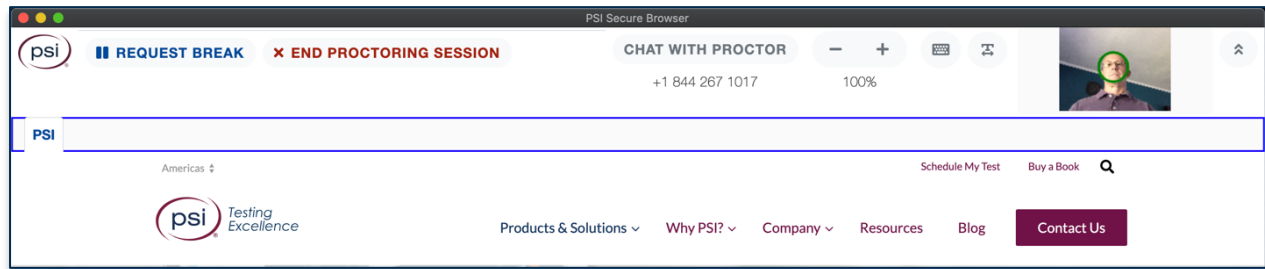


Image 1

The **red ring** in the following image illustrates Facial Detection enabled and unable to detect a face in the video stream:

The **red ring** in the following image illustrates Facial Detection enabled and unable to detect a face in the video stream:

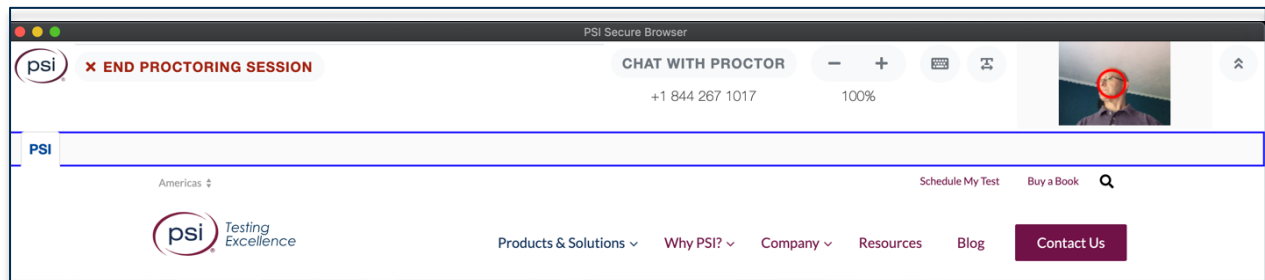
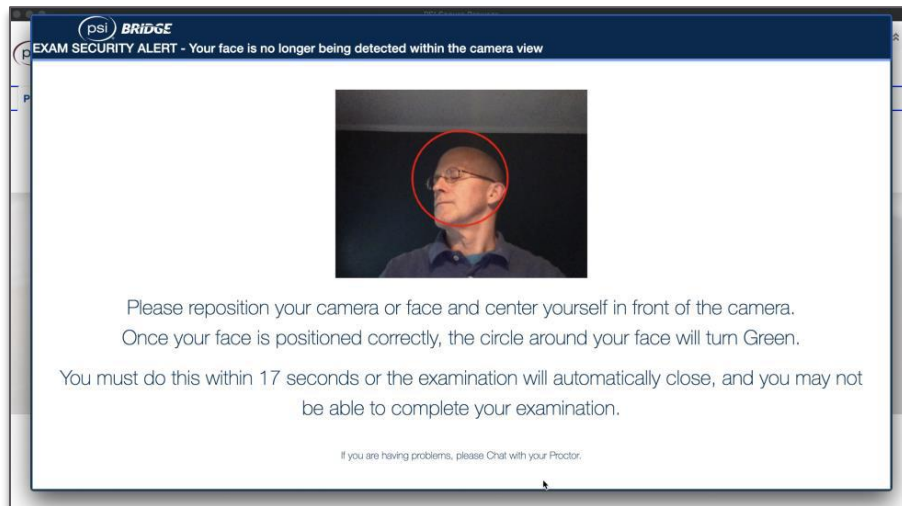


Image 2

The **red ring** in the following image illustrates the **termination warning message** informing the candidate that their exam will be terminated if they don't resolve the situation before the timer expires.

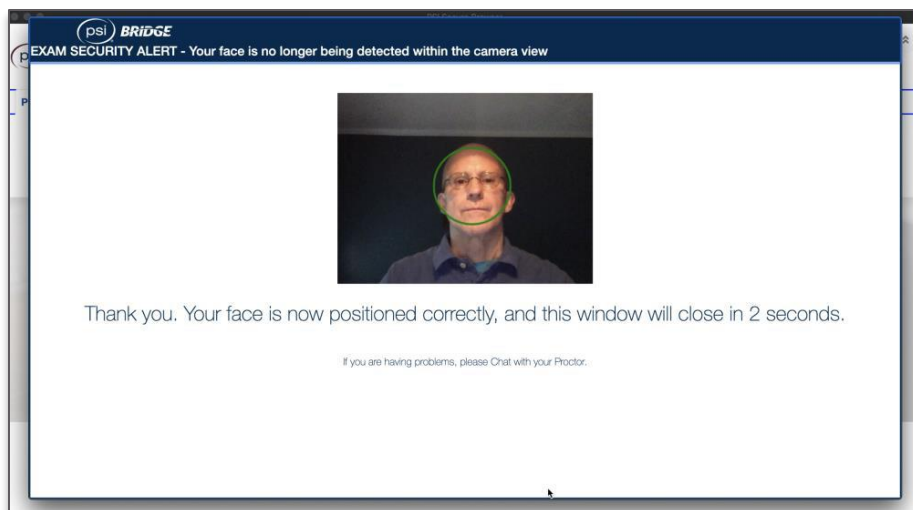
The value for the timer – and the delay, before the screen below is displayed – are configurable values in the RPaaS Org Defaults. The Product defaults are currently configured for 21600 sec (i.e. 6 hrs.) of alert delay and 600 sec (i.e. 10 minutes) of the termination delay. The default values have been set artificially high to ensure that the exam does not auto terminate unless you demand it. Therefore, if there is no face detected, the exam will record a violation, but not terminate.

Image 3



The **green ring** in the following image illustrates that the candidate has resolved the situation before the timer expires and circumvented the termination of their exam. When this timer expires, they will be allowed to resume their exam.

Image 4

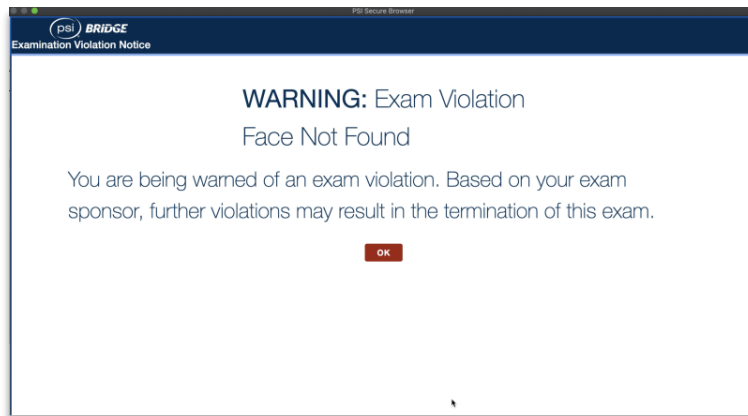


Violation & termination status

Once the previous screen is removed by the Secure Browser, the candidate will receive the **second warning screen** below, to drive home the requirement that they keep their focus on the screen throughout the proctoring session. This warning will appear every time the alert timer expires.

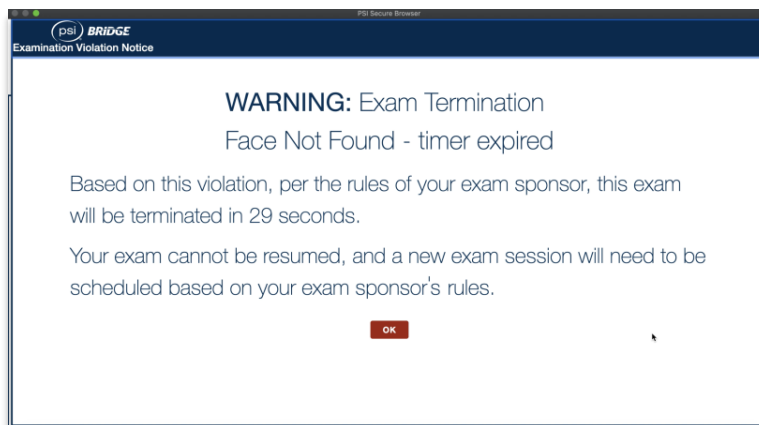
If a proctor recognizes that the PSI Secure Browser is having difficulty detecting a candidate's face, they can disable facial detection so that these alerts will be suppressed for the remainder of the exam.

Image 5



If the termination timer expires (*Image 3*), then the candidate will see the following screen as notification that their proctoring session is being terminated due to failing to comply with the requirement of staying in proper view of the camera throughout the entire proctoring session.

Image 6





© 2021 PSI Services LLC. All rights reserved.

Other than for the purposes of using PSI's electronic assessment service, no portion of this publication may be translated or reproduced in whole or in part, stored in a retrieval system, or transmitted in any form or by any means (electronic, mechanical, photocopying, recording or otherwise) without the prior written permission of the copyright owner. This publication may not be resold, rented, lent, leased, exchanged, given or otherwise disposed of to third parties. Neither the purchaser nor any individual test user employed by or otherwise contracted to the purchaser may act as agent, distribution channel or supplier for this publication.

PSI and the PSI logo are registered trademarks of PSI Services LLC.

psionline.com

 **@PSIServicesLLC**

 **PSI Services LLC**